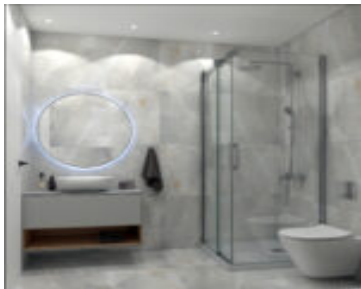
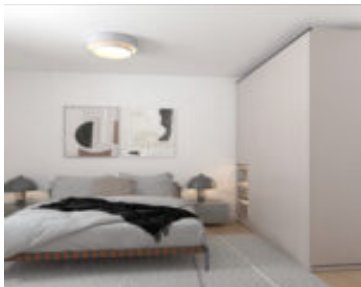


ELEVATED DUPLEX IN GLYFADA: DESIGNED FOR MODERN SOPHISTICATION

<https://greecegoldenvisa.com.gr/zh-hans/>



Bedrooms: 3 Total 1 Bedroom on the Semi-Floor (Basement [...])



HELLENIC_INVESTMENT@greecegoldenvisa.com.gr

- 3 □
- 3 □□
- Apartment
- Properties
- Active
- 142 □□□

Basics



□□: Properties □□: Apartment

00: Active 00: 3 0

□□: **3** □□ □□□□: 6

00: 142 000 0000: The apartment is a duplex distributed across three levels (Semi-Floor, Ground Floor, and Loft/Mezzanine)

Building Details

□□□□: Concrete

□□□□: Stone

000: Garage - attached

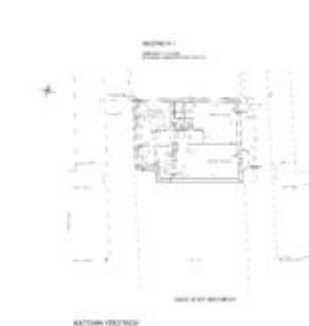
□□□: Finished

□□: Stone

Construction Status

Construction Status: Completed

Floor Plans



Amenities & Features

🏠: High-Quality Construction, Modern Lobby & Entrance, Oven, Prime Urban Location, TV

☐☐: Air conditioning, Bathroom, Bedrooms, Garden

